



Addressing social and environmental resilience through school meals: the SF4C project

Manuel Franco MD, PhD

Associate Professor

School of Medicine, University of Alcalá, Spain

Adjunct Associate Professor

Department of Epidemiology

Johns Hopkins Bloomberg School of Public Health, Baltimore

@mfranco_uah

School Food 4 Change

**Creating a shift to both sustainable and healthy
diets by impacting 600,000 school children
and 3,000 schools in 12 EU countries**

Mission & Vision

Through our education channels, our youngest generations (0-18 years of age) will develop their **awareness about food** and will be empowered **to promote a sustainable and healthy food culture**.

SF4C views schools as catalysts for a **systemic and multi-actor change** toward a sustainable and healthy food system.

Children are the adults of the future and SF4C will achieve a **long-lasting systemic transformation**, that will benefit both people and planet.

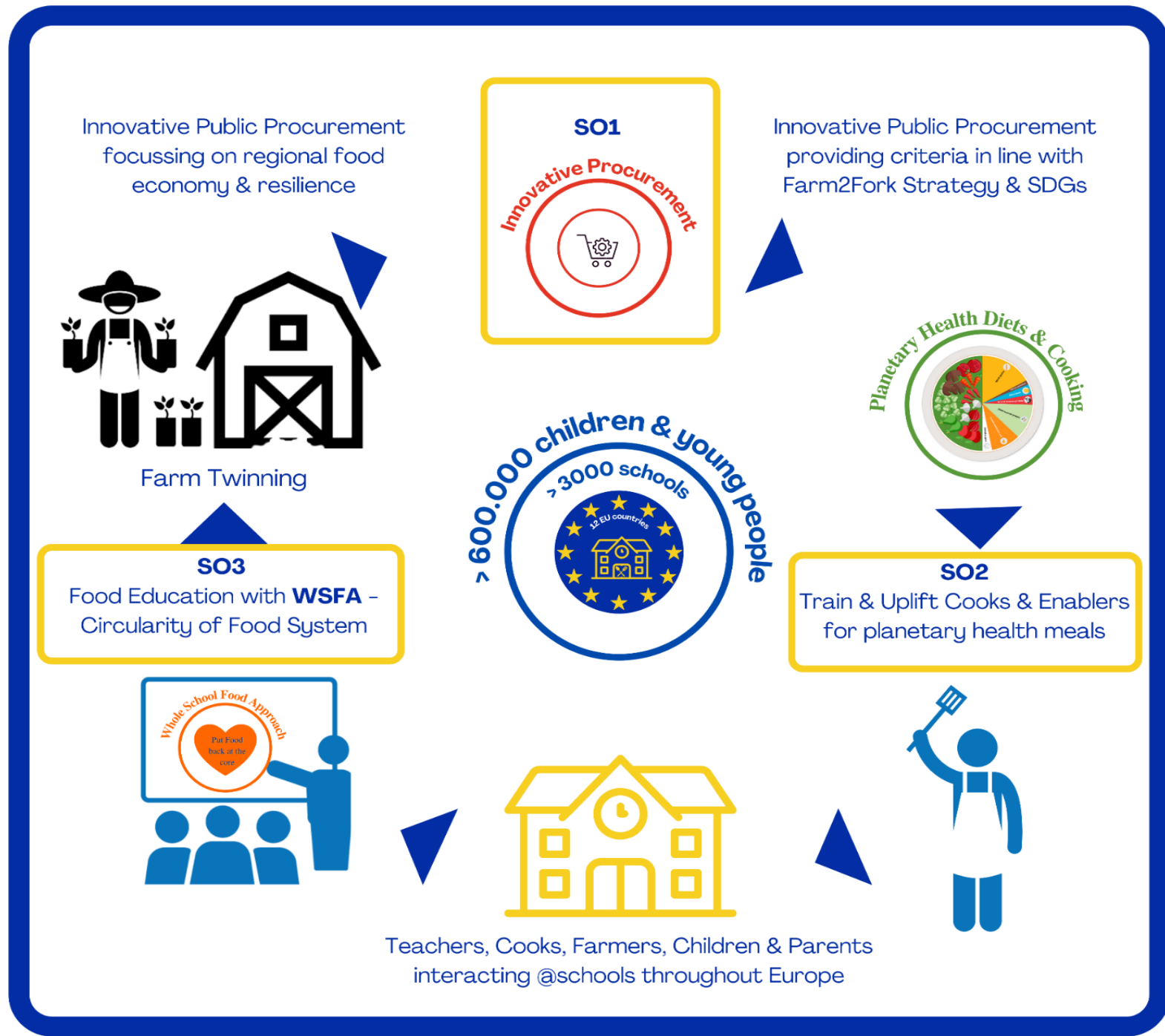
GOAL

To **create a shift** to both **sustainable and healthy diets** on a **broad societal scale** by directly impacting over 600,000 school children and over 3,000 schools in 12 EU countries and **providing a framework and best practice** that is swiftly implementable by all schools in Europe.

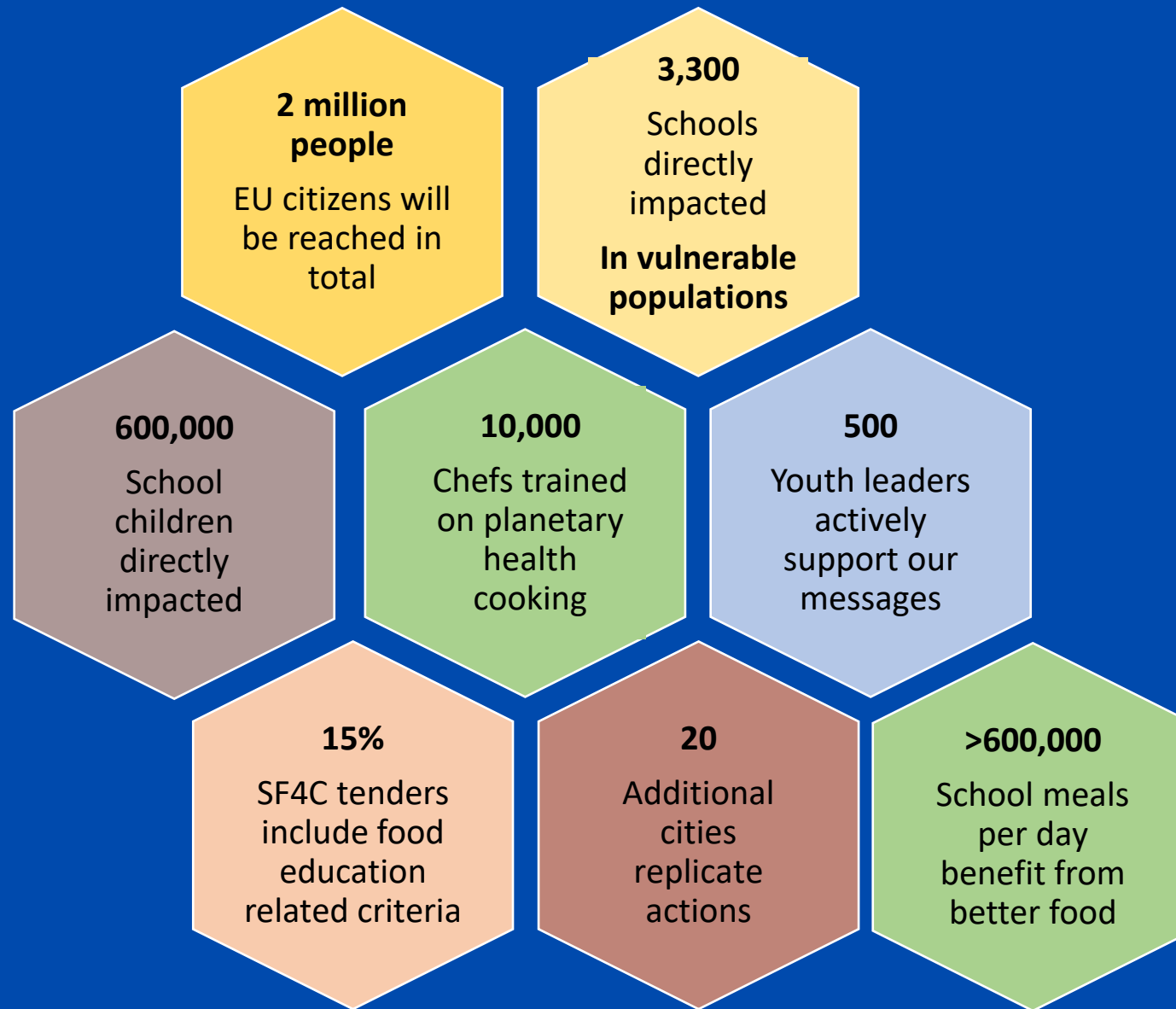
SF4C will shift school meals into a new paradigm by focusing on the **relationship with public health and territorial, social and environmental resilience**, learning also from the experiences of the COVID-19 pandemic.



SF4C will use a Triple action approach



Some of the impacts..



School Food 4 Change

Partners

Implementation partners

14 local governments

Budapest (Hungary), Copenhagen (Denmark) Essen & Nuremberg (Germany), Ghent & Leuven (Belgium), Lyon (France), Malmö & Umea (Sweden), Milan & Nuoro (Italy), Tallinn & Viimsi Parish, (Estonia), Vienna (Austria) + LTPs

1 provincial government

Dordogne (France)

1 regional government

Valencia Regional Government (Spain)

2 networks of WSFA

from Czech Republic and Slovakia

9 Associate partners

Antwerp (BE), Madrid (ES), Nitra (SK), Zaragoza (ES), District of Raca (SK), Municipality Schaerbeek (BE), Bagno a Ripoli and Cuneo (IT), Rijeka University

Replication cities to be recruited

Supporting partners

12 National Lead Partners (NLPs)

WWF SE, BESEF, Mensa Civica, Speiseräume, Risteco, Ecosistemi, Rikolto, SEI Tallinn, SZS CZ, SZS SK, City Vienna, City Copenhagen

Research partners

UAH, SEI, Eurecat

Further expert partners

IFOAM Organics Europe, FTAO

WP Leads

Rikolto (WSFA), UNISG (training) and ICLEI ES (procurement), WWF Sweden, IFOAM + LTPs

Communication & outreach

WWF SE, IFOAM Organics Europe, ICLEI

Overall coordination

ICLEI ES